

# Werner. Collected works.

Gregor Joseph

**Werner**

**VI Fugen in Quartetten**

WerW M.24

Fugues

*2 vl, vla, vlc, [bc]*

edited by Wolfgang Esser-Skala

*Full score*

**ESSER**  
Skala  
Edition



Edition Esser-Skala e.U. · Koppl, Austria · 2026

© 2026 by Edition Esser-Skala e.U. This edition is licensed under a Creative Commons Attribution-ShareAlike 4.0 International License. To view a copy of this license, visit <https://creativecommons.org/licenses/by-sa/4.0/>.

Edited by Wolfgang Esser-Skala ·  0000-0002-7350-4045.

Music engraving by LilyPond 2.24.4 (<https://www.lilypond.org>) and EES Tools v2026.01.0.

Front matter typeset with Source Sans and Fredericka the Great.

Please report any errors or mistakes to [edition@esser-skala.at](mailto:edition@esser-skala.at).

Archival Resource Key: **ark:68748/e1gjwm24**

 [edition-esser-skala/werner-collected-works](https://doi.org/10.68748/e1gjwm24)

v2026.01.0, 2026-01-31 (46bb32884f1a42f9f1bfa374f83d2cd613e7b3c8)



# Critical Report

## Abbreviations

bc	basso continuo
vl	violin
vla	viola
vlc	violoncello

## Sources

C1	<i>Library</i>	US-DMu
	<i>Shelfmark</i>	269477
	<i>Category</i>	print (principal source)
	<i>Date</i>	1804
	<i>RISM ID</i>	990068295
	<i>License</i>	public domain
	<i>URL</i>	<a href="https://idn.duke.edu/ark:/87924/r3qz22w7k">https://idn.duke.edu/ark:/87924/r3qz22w7k</a>
	<i>Notes</i>	Artaria, Vienna, plate number 1707

## Commentary

In general, this edition closely follows the principal source. Any changes that were introduced by the editor are indicated by italic type (lyrics, dynamics and directives), parentheses (expressive marks and bass figures) or dashes (slurs and ties). Accidentals are used according to modern conventions. For further details, consult the Editorial Guidelines available on the Edition's webpage.

Asterisks denote the following emendations:

<i>Mov.</i>	<i>Bar</i>	<i>Staff</i>	<i>Description</i>
–	–	vlc	All bass figures have been added by the editor.
1	35	vl 2	1st note in C1: b'8.
2	10	vl 1	1st ♫ in C1: c'''
3	1	vl 1	4th ♫ in C1: c''8
	1	vl 2	6th to 8th ♫ in C1: g'8–e♭'8–d'8
	46	vlc	4th ♫ in C1: d16–e♭16
6	51	vl 1	2nd ♫ in C1: f''8–d''16–f''16



# Contents

1	Larghetto – Vivace – Adagio	1
2	Largo – Allegro – Adagio	8
3	Adagio ma poco – Allegro	17
4	Grave – Allegro	22
5	Adagio ma poco – Allegro – Adagio	31
6	Adagio ma poco – Vivace	37









30 *Vivace*

pp pp pp pp

f f

$\flat 7$   $\flat 6$   $\frac{5}{4}$   $\frac{3}{3}$

34

f f

$\frac{5}{5}$   $\frac{6}{6}$   $\frac{4}{2}$   $\frac{6}{6}$

37

$\flat 6$   $\frac{6}{4}$   $\frac{2}{2}$   $\flat 6$   $\frac{6}{4}$   $\frac{2}{2}$   $\flat 6$   $\frac{4}{2}$   $\frac{6}{6}$   $\frac{7}{7}$   $\flat 6$

40

Measures 40-42 of a musical score. The score is written for four staves: Treble 1, Treble 2, Bass 1, and Bass 2. The key signature has one flat (B-flat). Measure 40 features a treble 1 staff with a half note G4, a treble 2 staff with a half note F4, a bass 1 staff with a half note E3, and a bass 2 staff with a half note D3. Measure 41 features a treble 1 staff with a half note G4, a treble 2 staff with a half note F4, a bass 1 staff with a half note E3, and a bass 2 staff with a half note D3. Measure 42 features a treble 1 staff with a half note G4, a treble 2 staff with a half note F4, a bass 1 staff with a half note E3, and a bass 2 staff with a half note D3. The score includes a repeat sign at the end of measure 42.

43

Measures 43-45 of a musical score. The score is written for four staves: Treble 1, Treble 2, Bass 1, and Bass 2. The key signature has one flat (B-flat). Measure 43 features a treble 1 staff with a half note G4, a treble 2 staff with a half note F4, a bass 1 staff with a half note E3, and a bass 2 staff with a half note D3. Measure 44 features a treble 1 staff with a half note G4, a treble 2 staff with a half note F4, a bass 1 staff with a half note E3, and a bass 2 staff with a half note D3. Measure 45 features a treble 1 staff with a half note G4, a treble 2 staff with a half note F4, a bass 1 staff with a half note E3, and a bass 2 staff with a half note D3. The score includes a repeat sign at the end of measure 45.

46

Measures 46-48 of a musical score. The score is written for four staves: Treble 1, Treble 2, Bass 1, and Bass 2. The key signature has one flat (B-flat). Measure 46 features a treble 1 staff with a half note G4, a treble 2 staff with a half note F4, a bass 1 staff with a half note E3, and a bass 2 staff with a half note D3. Measure 47 features a treble 1 staff with a half note G4, a treble 2 staff with a half note F4, a bass 1 staff with a half note E3, and a bass 2 staff with a half note D3. Measure 48 features a treble 1 staff with a half note G4, a treble 2 staff with a half note F4, a bass 1 staff with a half note E3, and a bass 2 staff with a half note D3. The score includes a repeat sign at the end of measure 48.

49

3 6 3 6 b b7 7 7 7 7

=

52

7 7 8 6 7 5 6 6 # 6 5

=

55

6 5 # # #

58

5 6  $\frac{4}{2}$  6 2  $\flat 6$   $\frac{4}{2}$  6  $\frac{4}{2}$  6 2  $\flat 6$

=

61

7 6 5 6 6

=

65

6 6 6 6 6 6 7 6 7 6

69

5 6  $\flat 2$  6 2  $\flat 6$

72

$\flat 6$  6  $\frac{4}{2}$   $\flat 6$  2  $\flat 6$  7 6 6

75

Adagio

7  $\flat$   $\flat 5$   $\flat 7$   $\flat 6$   $\frac{5}{3}$  [b]

## 2 Largo – Allegro – Adagio

**Largo**

1 vl

2 v2

vla

vlc

f p f p f p f p f p

f p f p f p f p f p

f p f p f p f p f p

f p f p f p f p f p

6 6 5 6 4 3 6 4 6 7

12

f p f p f p p più p

f p f p f p p più p

f p f p f p p più p

f p f p f p p più p

b 4 7 6 4 7 5 7 più p

2 5 # 4 5 4

**Allegro**

23

pp f

pp f

pp

pp

6 #

28

Trill

31

*f*

*f*

6  $\frac{6}{4}$  6 5# 6 6

33

Trill

Trill

5# 6 b6 b 6 8 b7

35

Measures 35 and 36 of a musical score. The score is written for four staves: Treble 1, Treble 2, Bass 1, and Bass 2. The key signature has one flat (B-flat). Measure 35 contains various eighth and sixteenth notes. Measure 36 continues the melodic lines. Below the staves, there are fingering numbers: 9, 8, 6, 5, 6, 5, 7, 6, 6, 5, #, and a dash.

=

37

Measures 37 and 38 of a musical score. The score is written for four staves: Treble 1, Treble 2, Bass 1, and Bass 2. The key signature has one flat (B-flat). Measure 37 features a sequence of eighth notes in the Treble 2 staff. Measure 38 continues the piece. Below the staves, there are fingering numbers: 6, 7, 6, 5, b6, 6, 6.

=

39

Measures 39 and 40 of a musical score. The score is written for four staves: Treble 1, Treble 2, Bass 1, and Bass 2. The key signature has one flat (B-flat). Measure 39 includes a trill (tr) in the Bass 1 staff. Measure 40 continues the piece. Below the staves, there is a sharp symbol (#) under the Bass 2 staff.



41

Measures 41 and 42 of a musical score. The score is written for four staves: two treble staves and two bass staves. The key signature has one flat (B-flat). Measure 41 features a whole note in the first treble staff, a half note in the second treble staff, and a half note in the first bass staff. Measure 42 features a half note in the first treble staff, a half note in the second treble staff, and a half note in the first bass staff. The second bass staff is empty in both measures.

43

Measures 43 and 44 of a musical score. The score is written for four staves: two treble staves and two bass staves. The key signature has one flat (B-flat). Measure 43 features a half note in the first treble staff, a half note in the second treble staff, and a half note in the first bass staff. Measure 44 features a half note in the first treble staff, a half note in the second treble staff, and a half note in the first bass staff. The second bass staff is empty in both measures.

6 5 9 8 6 6 5 9 8 6

45

Measures 45 and 46 of a musical score. The score is written for four staves: two treble staves and two bass staves. The key signature has one flat (B-flat). Measure 45 features a half note in the first treble staff, a half note in the second treble staff, and a half note in the first bass staff. Measure 46 features a half note in the first treble staff, a half note in the second treble staff, and a half note in the first bass staff. The second bass staff is empty in both measures.

6 5 9 8 6 9 8 6 9 8 6

47

Measures 47-48 of a musical score in B-flat major. The score is written for piano with four staves: two treble staves and two bass staves. Measure 47 features a melodic line in the first treble staff, a descending eighth-note pattern in the second treble staff, a whole note in the first bass staff, and a descending eighth-note pattern in the second bass staff. Measure 48 continues the melodic line in the first treble staff, has a whole rest in the second treble staff, a whole note with a trill in the first bass staff, and a descending eighth-note pattern in the second bass staff. Fingering numbers are provided below the bass staves: 9, 8, 6, 6, 5, 4, 3, 6, 5, 4, 3, and 6.

=

49

Measures 49-50 of a musical score in B-flat major. The score is written for piano with four staves. Measure 49 features a descending eighth-note pattern in the first treble staff, a whole rest in the second treble staff, a descending eighth-note pattern in the first bass staff, and a descending eighth-note pattern in the second bass staff. Measure 50 continues the descending eighth-note pattern in the first treble staff, has a whole note with a trill in the second treble staff, a descending eighth-note pattern in the first bass staff, and a descending eighth-note pattern in the second bass staff. Fingering numbers are provided below the bass staves: 6, 2, 6, 6, 6, 6, and 6.

=

51

Measures 51-53 of a musical score in B-flat major. The score is written for piano with four staves. Measure 51 features a descending eighth-note pattern in the first treble staff, a descending eighth-note pattern in the second treble staff, a descending eighth-note pattern in the first bass staff, and a whole rest in the second bass staff. Measure 52 continues the descending eighth-note pattern in the first treble staff, has a whole note with a trill in the second treble staff, a descending eighth-note pattern in the first bass staff, and a whole rest in the second bass staff. Measure 53 continues the descending eighth-note pattern in the first treble staff, has a whole note with a trill in the second treble staff, a descending eighth-note pattern in the first bass staff, and a whole rest in the second bass staff.

54

6 5 6 3 6 5

57

6 6 5 6 8 5 7 5 5 #

60

6 5 6 5

63

6 6 5 6 5 5 6 6 6 6 5 6 4 3 4 2

66

5 2 - 4 b 6 4 b - b7 5 6 4 5 3 9 8 -

69

6 #

72

4 4 6 5 4 9 8 6 3 6 5 9 8 6 6 5

75

6 5 6 5 4 6 5 6 5 6 5

78

8 6 7 5 8 6 7 5 6 8 6 7 5 #

81

*tasto solo*

84

Adagio

# 6 4 #

87

Adagio

*pp*

*pp*

*pp*

*pp*

$\flat \frac{4}{2}$  2 —  $\flat \frac{7}{5}$   $\flat 7$  #  $\frac{6}{4}$  2 — 5  $\frac{7}{4}$   $\flat$   $\frac{6}{4}$  5 #



12 *Allegro*

pp pp pp pp f f

5 7 4 6 6 b

==

17

6 6 6 b 6 6

==

21

b 6 6 b6 6/4 - 5/3



25

6 6 b 6/5

29

6/5 b6/5 b5 6/b5

33

6 # 6 6/4 5/# 5/3

37

6 6 6 6

=

41

6 6 6 6

=

45

6 6 6 6



## 4 Grave – Allegro

Grave

1

vl

2

vla

vcl

*f*

*f*

*f*

6 7 6 4 9 6 5 6 4

=

5

*p*

*p*

*p*

*p*

6 9 8 9 6 7 6 7 6 6 5 4

=

9

*f*

*f*

*f*

*f*

7 4 6 6 6 5 9 8 9

13

9 8 9 9 8 6 5 6 4 3 6 7 46

≡

17

6 8 7 6 5 7 4 7 4 5 #

≡

21

6 - 6 6

$\equiv$  $\equiv$ 

33.

Treble 1: *p* *f* *p*  
 Treble 2: *p* *f* *p*  
 Bass 1: *p* *f* *p*  
 Bass 2: *p* *f* *p*

6 5  $\flat 6$   $\flat 5$  6  $\flat 6$  5  $\flat 6$  6 5 7  $\flat 4$   $\flat 4$   
 $\flat 5$  5  $\flat$   $\flat 4$  2

38 *pp* *Allegro* *f*

♭ 7 4 3 7 6 ♭

43 *f*

46 *f*

49

*f*

6  $\flat 7$   $\sharp$  6  $\flat 5$   $\sharp$

52

$\flat 7$  6  $\flat 7$  6 7  $\flat 6$   $\flat 7$  6  $\flat 5$   $\flat 5$

55

$\flat 5$  6  $\sharp$



59

4 5 6 6 6 6 6 6

≡

62

≡

65

4 3 5 6 6 6 6 6

69

Measures 69-71 of a musical score in B-flat major. The score is written for four staves: Treble 1, Treble 2, Bass 1, and Bass 2. Measure 69 features a whole rest in Treble 1, a half note G4 in Treble 2, a half note F4 in Bass 1, and a whole rest in Bass 2. Measure 70 shows a half note G4 in Treble 1, a half note F4 in Treble 2, a half note E4 in Bass 1, and a whole rest in Bass 2. Measure 71 contains a half note G4 in Treble 1, a half note F4 in Treble 2, a half note D4 in Bass 1, and a whole rest in Bass 2. Fingering numbers 1, 2, and 3 are indicated below the notes in measures 69 and 70.

=

72

Measures 72-74 of a musical score in B-flat major. The score is written for four staves: Treble 1, Treble 2, Bass 1, and Bass 2. Measure 72 features a half note G4 in Treble 1, a half note F4 in Treble 2, a half note E4 in Bass 1, and a whole rest in Bass 2. Measure 73 shows a half note G4 in Treble 1, a half note F4 in Treble 2, a half note D4 in Bass 1, and a whole rest in Bass 2. Measure 74 contains a half note G4 in Treble 1, a half note F4 in Treble 2, a half note E4 in Bass 1, and a whole rest in Bass 2. Fingering numbers 1, 2, 3, 4, 5, 6, 7, 8, and 9 are indicated below the notes in measures 72 and 73.

=

75

Measures 75-77 of a musical score in B-flat major. The score is written for four staves: Treble 1, Treble 2, Bass 1, and Bass 2. Measure 75 features a half note G4 in Treble 1, a half note F4 in Treble 2, a half note E4 in Bass 1, and a whole rest in Bass 2. Measure 76 shows a half note G4 in Treble 1, a half note F4 in Treble 2, a half note D4 in Bass 1, and a whole rest in Bass 2. Measure 77 contains a half note G4 in Treble 1, a half note F4 in Treble 2, a half note E4 in Bass 1, and a whole rest in Bass 2. Fingering numbers 1, 2, 3, 4, 5, 6, 7, 8, and 9 are indicated below the notes in measures 75 and 76.

78

Handwritten musical score for 'The Rose Tree'. The score is written on four staves. The top two staves are for the vocal melody, and the bottom two staves are for the piano accompaniment. The key signature is one flat (B-flat), and the time signature is 2/4. The melody is in the soprano voice, and the piano accompaniment is in the right and left hands. The score is divided into three measures. The first measure contains the first line of the melody and the first part of the piano accompaniment. The second measure contains the second line of the melody and the second part of the piano accompaniment. The third measure contains the third line of the melody and the third part of the piano accompaniment. The piano accompaniment consists of a simple harmonic progression in the right hand and a bass line in the left hand. The melody is a simple folk tune with a repeating pattern of eighth and sixteenth notes.



81

Sheet music for 'The Rose Tree' in G major, 3/4 time. The score is for a piano and voice. The piano part consists of four staves: Treble 1, Treble 2, Bass 1, and Bass 2. The voice part is on a single staff. The music is in 3/4 time and G major (one sharp). The piano part features a rhythmic accompaniment with eighth and sixteenth notes. The voice part has a melody with lyrics. The score is divided into three measures. The first measure shows the piano introduction and the first line of the voice melody. The second measure continues the piano accompaniment and the voice melody. The third measure shows the piano accompaniment and the final line of the voice melody. The piano part includes figured bass notation in the Bass 2 staff.



84

6 4 ♯ 6 6 —  
2 —

6 5 6 ♯  
♭

♯ 6 — 6 — ♭  
5 —

7 6  
♯ 5

88

tr

6 5 7 - 7 7 - 7 6 b b

tasto solo

≡

92

p

p

p

4 b p 5

≡

96

f

f

f

f unisono

6 7 b b

# 5 Adagio ma poco – Allegro – Adagio

Adagio ma poco

1 vl

2

vla

vlc

*f*

*f*

*f*

6 5 9 8 4 4 6 5 9 8 7 6 5 7 6 5

5

*p*

*p*

*p*

*p*

7 6 5 7 5 6 4 7 9 4 5 4 9 5 6 5 6 5 9 5 7 4 #

10

*ff*

*ff*

*ff*

*ff*

4 2 7 5 6 4 2

14

p

p

p

p *tasto solo*

5 6 7  $\frac{b}{4}$   $\frac{b}{4}$  7 7 7 7 6 #

==

18

Allegro

f

f

f

f

7 6 # 3 2 - 6  $\frac{b}{4}$  7 #

==

22

9 8 7 6 - 5 9 # 8 6 8 3 7  $\frac{b}{4}$

25

25

=

28

28

4 # 6 7 6 6 7 6 6 4

=

31

31

7 6 4 3 # 6 6 6 6 b6 b6 6 6 6 6 b

34

6 7 6 5 3 6 5 4

38

# 7 #

41

f 6 5 6 4 3



44

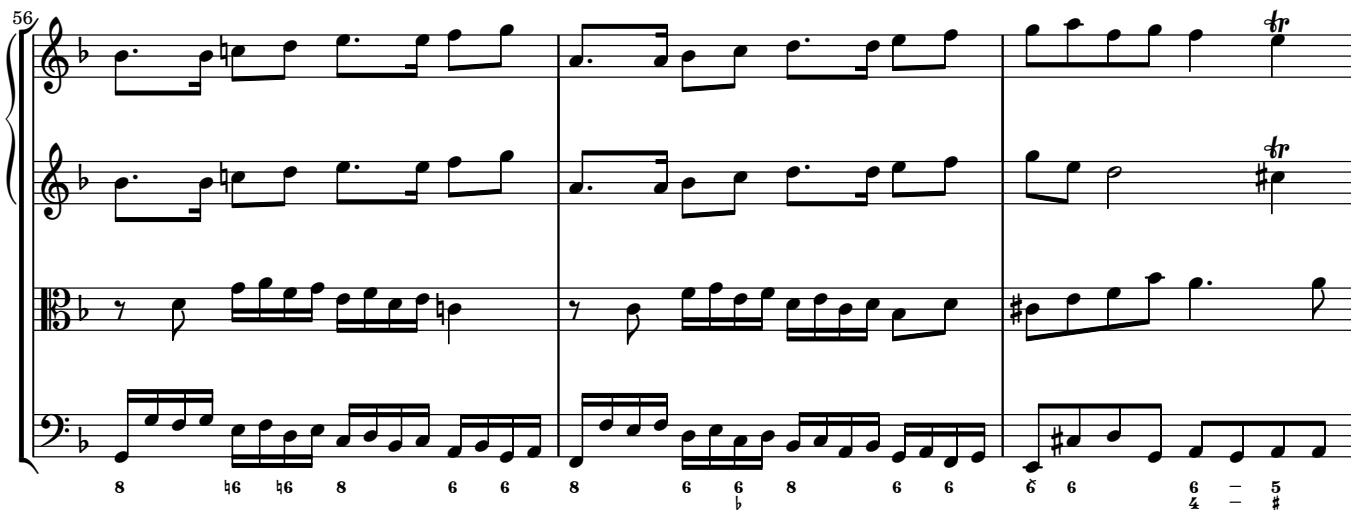
7 6 6 7 6 6 7 6 6 6 6 6

47

6 6 6 6 6 6 6 5 5 6

50

6 6 6 6 6 6 6 7 7



# 6 Adagio ma poco – Vivace

Adagio ma poco

1 vl p f

2 p f

vla p f

vlc p f

5/3 6 4 7/6/2 8/5/4 f 4/2

4 vl p

v2 p

vla p

vlc p

6 4/2 6 6 p 5/4 7 6/5 4 7/4/2

7 vl f

v2 f

vla f

vlc f

8 # f 7/4 4/2 6 7/5 # 5

12

6 7 5 5 9 5 6 6 7 6 5 9 6 5 9 10 9 7 8 7 5

==

16

9 8 7 5 6 7 6 6

*p* *più p* *pp* *f*

*p* *più p* *pp* *f*

*p* *pp* *f*

==

19

5 5 6 6 6 5 5 6 #



34

6

=

38

p

6

=

42

f

6

46

**f**

5 6 5 6 6 6 6 6

50

**f**

6 6 6 6 6 6 6 6

54

**p**

6 6 6 6 6 6 6 6

58

**f** **f** **f** **f**

6 6 5 5 6 #

62

**f** **f** **f** **f**

6 6 6 6 6 6 6 6 6 6

66

**p** **p** **p** **f** **f**

6 6 5 7 # 6 6 6 6 6 5 4 # 5 6 5 #