

# Tůma. Collected works.

František Ignác Antonín

**Tůma**

**Sinfonia**

TumW J.16

Sinfonia

*2 vl, vla, bc*

edited by Wolfgang Esser-Skala

*Full score*

**ESSER**  
Skala  
Edition



Edition Esser-Skala e.U. · Koppl, Austria · 2026

© 2026 by Edition Esser-Skala e.U. This edition is licensed under a Creative Commons Attribution-ShareAlike 4.0 International License. To view a copy of this license, visit <https://creativecommons.org/licenses/by-sa/4.0/>.


Edited by Wolfgang Esser-Skala ·  0000-0002-7350-4045.

Music engraving by LilyPond 2.24.4 (<https://www.lilypond.org>) and EES Tools v2026.01.0.

Front matter typeset with Source Sans and Fredericka the Great.

Please report any errors or mistakes to [edition@esser-skala.at](mailto:edition@esser-skala.at).

Archival Resource Key: **ark:68748/e1fitj16**

 [edition-esser-skala/tuma-collected-works](https://doi.org/10.21203/a4.34a4032a6872b54802ac08c3717cebfdcfc428ef)

v2026.01.0, 2026-01-31 (34a4032a6872b54802ac08c3717cebfdcfc428ef)



# Critical Report

## Abbreviations

bc     basso continuo  
vl     violin  
vla    viola

## Sources

**B1**     *Library*        A-LA  
          *Shelfmark*      360  
          *Category*      manuscript copy (principal source)  
          *Date*            1740–1768  
          *RISM ID*       603000432  
          *License*       public domain  
          *URL*            none

## Commentary

In general, this edition closely follows the principal source. Any changes that were introduced by the editor are indicated by italic type (lyrics, dynamics and directives), parentheses (expressive marks and bass figures) or dashes (slurs and ties). Accidentals are used according to modern conventions. For further details, consult the Editorial Guidelines available on the Edition's webpage.

Asterisks denote the following emendations:

<i>Bar</i>	<i>Staff</i>	<i>Description</i>
–	bc	All bass figures have been added by the editor.
64	vla	3rd ♮ in <b>B1</b> : g'4
162	vla	4th ♮ in <b>B1</b> : a'16.–g'32
171	vla	3rd ♮ in <b>B1</b> : b♭'8
202	vla	3rd ♮ in <b>B1</b> : b4



## J.16 Sinfonia

**Allegro**

*I*  
Violino *f*

*II*  
Violino *f*

*Viola*  
*f*

*Basso continuo*  
*f* \*

**6**

**12**

18

7 6  $\flat 6$  5  $\sharp 4$  6 6  $\flat 6$  5  $\sharp 4$

25

6 7 #  $\flat 6$  5 5

30

#  $\flat 6$  5 #  $\flat 6$   $\sharp 4$  6 5  $\flat 6$

36

**f** 3 3 3 3

**f** 3 3 3 3

**f**

6 6 # 6 # 6 6 5 #

41

**p** 3 3 3 3

**p** 3 3 3 3

**p**

**f** 3 3 3 3

**f**

# 6 # 6 6 6 6 5 #

46

# # # # #

# # # # #

# # # # #

# # # # #

[illegible][illegible]



70

6 5 7 # # 6 5 # 7 5 #

75

*p* *f* *p* *f* *p* *f* 6 5 # 6 5 # 6 5 #

81

6 5 # # 6 5 # 6 5 # 6 5 #

86

91

96

10)

Musical score for "The Rose Tree" in G major, 6/8 time. The score is for a piano and includes four staves: Treble 1, Treble 2, Bass 1, and Bass 2. The key signature has one sharp (F#). The time signature is 6/8. The score is divided into six measures. The first measure has a treble clef and a key signature of one sharp. The second measure has a treble clef and a key signature of one sharp. The third measure has a treble clef and a key signature of one sharp. The fourth measure has a treble clef and a key signature of one sharp. The fifth measure has a treble clef and a key signature of one sharp. The sixth measure has a treble clef and a key signature of one sharp. The score includes dynamic markings (p, f), articulation (tr), and fingerings (3, 5, 6). The bass staff includes a key signature of one sharp and a time signature of 6/8. The score is written for a piano.

107

Handwritten musical score for 'The Rose Tree'. The score is written for four staves: Treble 1, Treble 2, Bass 1, and Bass 2. The key signature is one sharp (F#) and the time signature is 6/8. The piece is in common time (C). The score is divided into five measures. The first measure is a whole rest for all parts. The second measure starts with a piano (p) dynamic. The third and fourth measures continue the melody. The fifth measure starts with a forte (f) dynamic and includes the instruction 'unisono' for the Bass 1 and Bass 2 parts. The score ends with a double bar line.

112

musical score for piano, measures 112-115. The score is in D major (two sharps) and 3/4 time. It features four staves: two treble staves and two bass staves. Measures 112-114 show a melodic line in the upper staves and a rhythmic accompaniment in the lower staves. Measure 115 begins with a piano (p) dynamic marking.

118 *Andante*

*f* *p*

7 # 6 6  $\flat$  #  $\flat$  7 7 # 6 6  $\flat$  #  $\flat$

124

4 6 4 6  $\flat$   $\flat$  6 4 5 # 6  $\flat$  7  $\flat$

129

6 6 7  $\flat$ 5 7  $\flat$  6 6 2 6  $\flat$ 4 6

134

6 5 3  $b3$  6  $b$  6

139

6 3 3 3 3

144

3 6 6 6 6

149

Figured bass notation:  $b6$ ,  $6$ ,  $b5$ ,  $9\ 8\ 3$ ,  $b6$ ,  $9\ 8\ 6$ ,  $9\ 8\ b6$

154

Figured bass notation:  $b5$ ,  $b6$ ,  $b5$ ,  $b6$ ,  $b5$ ,  $b6$ ,  $6\ b5$

159

Figured bass notation:  $b5$ ,  $b5$ ,  $b5$ ,  $b4\ 5\ 3$ ,  $b5\ b6$ ,  $6$ ,  $-$ ,  $6$

164

Handwritten musical score for 'The Rose Tree'. The score is written for four staves (two treble and two bass clefs) and includes a key signature of one sharp (F#) and a common time signature (C). The music is in 4/4 time. The score is divided into five measures. The first measure contains a treble clef, a key signature of one sharp, and a common time signature. The second measure contains a treble clef, a key signature of one sharp, and a common time signature. The third measure contains a treble clef, a key signature of one sharp, and a common time signature. The fourth measure contains a treble clef, a key signature of one sharp, and a common time signature. The fifth measure contains a treble clef, a key signature of one sharp, and a common time signature. The score includes various musical notations such as notes, rests, and bar lines. The first measure is marked with a '6' below the bass line. The second measure is marked with a '6' below the bass line. The third measure is marked with a '6' below the bass line. The fourth measure is marked with a '6' below the bass line. The fifth measure is marked with a '6' below the bass line. The score is written in a clear, legible hand.

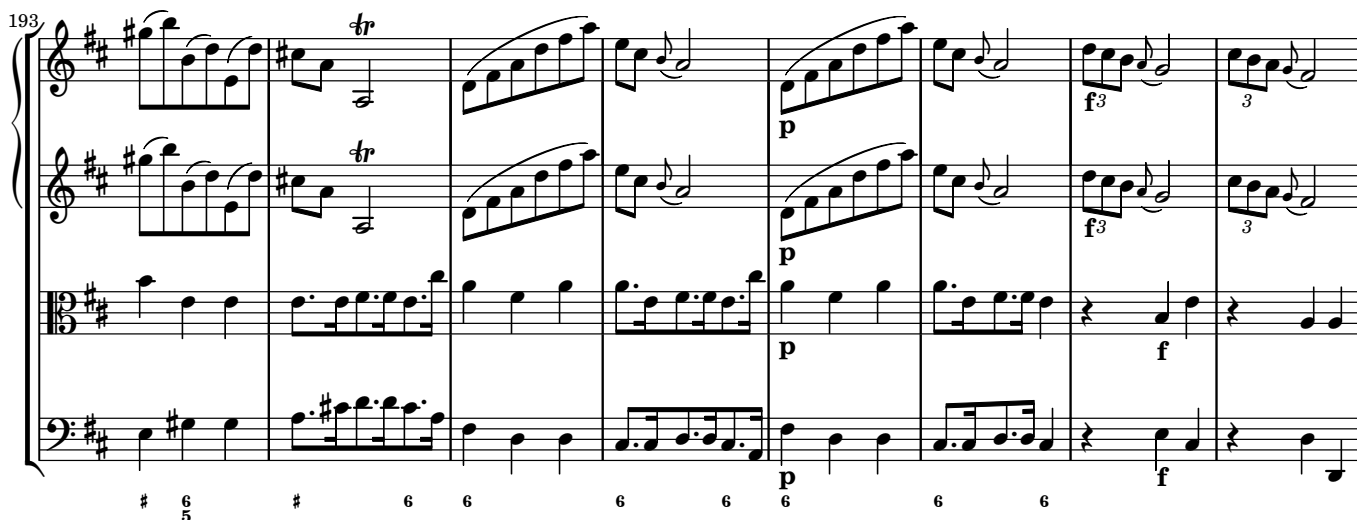


169

Musical score for 'The Rose Tree' (169-173). The score is in 4/4 time and features four staves: two treble staves (labeled 1 and 2) and two bass staves (labeled 3 and 4). The key signature is one flat (B-flat). The melody is primarily in the treble staves, with the bass staves providing harmonic support. The score includes various musical notations such as notes, rests, and accidentals. A red asterisk (\*) is placed above the third measure of the third staff, indicating a specific point of interest or a correction. The score is divided into measures by vertical bar lines, and the measures are numbered 169 through 173.



174. Musical score for 'The Rose Tree' in G major, measures 174-178. The score is for four staves: Treble 1, Treble 2, Bass 1, and Bass 2. It features a melody with a trill and a bass line with a descending scale. The key signature is one sharp (F#).





201

$p^3$   $f$   $p$

$p$   $f$   $p$

$p$   $f$   $p$

$p$   $f$   $p$

6 6 5 3 6

210

6 5  $b6$  6 7 4 4 # 6  $b$   $b6$  6 5 6  $b$  6 5

219

da capo sine al segno

6  $b6$   $b6$  6  $b6$   $b7$  6 6 6 6 5