

Werner. Collected works.

Gregor Joseph

Werner

Missa primitiva

WerW B.42

Mass

*S, A, T, B (solo), S, A, T, B (coro),
2 clno (C), a-trb solo, timp (C-G), 2 vl, b, org solo*

edited by Wolfgang Esser-Skala

Violino II

Esser
Skala
Edition



Edition Esser-Skala · Koppl, Austria · 2024

© 2024 by Edition Esser-Skala (Selbstverlag § 2 Abs 1 Z 7 GewO 1994). This edition is licensed under a Creative Commons Attribution-ShareAlike 4.0 International License. To view a copy of this license, visit <https://creativecommons.org/licenses/by-sa/4.0/>.

Music engraving by LilyPond 2.24.2 (<https://www.lilypond.org>) and EES Tools v2023.10.0.
Front matter typeset with Source Sans and Fredericka the Great.

Please report any errors or mistakes to edition@esser-skala.at.

 [edition-esser-skala/werner-collected-works](https://github.com/edition-esser-skala/werner-collected-works)
v2024.10.0, 2024-11-01 (9f5b89e63a8222e9816b4a6916374bc6bdb20b18)



1 Kyrie

Allegro

vl 2

f 3 3 3 3

4

7 **p** 3 3 3 3 3

10 2 **f** 3 3

15

18 **p** 3 3 3 3 *tr* *tr* 3 3

21 2 **f**

25 3 3 3 3 3

28 3

31 

34 *Larghetto* 

37 

40 

43 

46 

49 

52 

55 *Presto* 

63 *tr*



67



71



75



79



83



87



91



95



2 Gloria

Allegro

vl 2

f

4

7

10

3

15

Laudamus te · Gratias agimus tibi
tacet

Domine Deus

70 *Vivace assai*
vl 2 **f** *tr*

74

78 *tr* **p**

82 *tr*

86

90 **f**

94

98 [*tr*] **8** **f**

110 *tr*

Qui tollis

114 *Adagio*
vl 2

117

120

123

128 *Allegro*

130

132

134

136

Quoniam

Andante moderato

139 *vl 2* **ff**

141 **p** 3

143 **f** **p**

146 **p** *tr*

148 *tr* 3 *tr* 3 *tr* 3 *tr* 3 *tr* 3

150 *tr* 3 *tr* 3 *tr* 3 *tr* 3 *tr* 3 *tr* 3

152 *tr* **f**

155 **p**

159 **ff** *tr*

Cum Sancto Spiritu

162 *Largo*
vl 2 *f*

165 *p*

169 *Allegro*
6 *tr tr tr tr tr*

179

182 *tr tr*

185 *tr tr*

189 *tr [tr]*

192

195 *[tr] [tr]*
3 3

The image shows a page of musical notation for a violin part. It consists of ten staves of music. The first staff (measures 162-165) is marked 'Largo' and 'f'. The second staff (measures 165-169) is marked 'p'. The third staff (measures 169-179) is marked 'Allegro' and '6', and contains several trills. The fourth staff (measures 179-182) continues the melodic line. The fifth staff (measures 182-185) contains more trills. The sixth staff (measures 185-189) continues with trills. The seventh staff (measures 189-192) contains a trill and a bracketed trill. The eighth staff (measures 192-195) features a complex rhythmic pattern. The ninth staff (measures 195-200) contains two triplet trills and a final melodic phrase.

3 Credo

Vivace
f

2

3

5

7

9

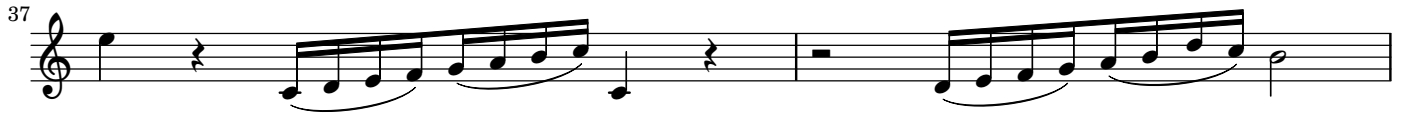
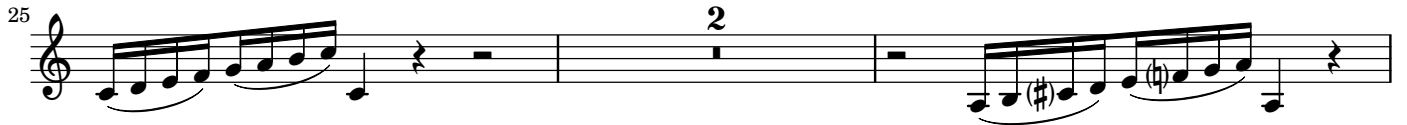
11

13

p

16

19



Et incarnatus est
tacet

Crucifixus

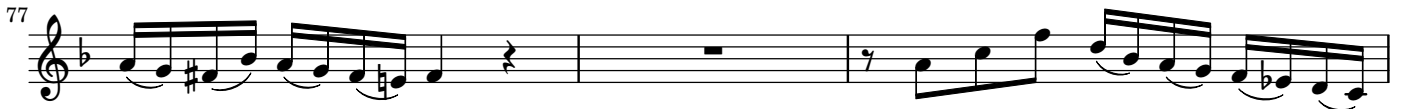
72 Tarde
vl 2 *p*



74



77



80



83



Et resurrexit

86 *Vivace*
vl 2 *f*

89

92

95

98 *p*

102

106

109

113 *Andante*
p 2

118 

120 

123 

128 

133 

136 

139 

142 

146 

4 Sanctus

Largo

vl 2

f

4

6

8

[tr]

3

3

Vivace

10

f

13

[tr]

3

3

15

p 3

3

3

f tr tr tr

18

p tr

tr

f 3 3

21

p tr tr tr tr

2

25  *f*

28 *Osanna · Allegro*  *f*

31 

34  *tr*

37 

40 

43 

45  *tr*

Benedictus

tacet

Osanna ut supra

6 Agnus Dei

Tempo ordinario

Violin 2 (vl 2) musical score, measures 1 through 18. The score is written in treble clef with a common time signature (C). The tempo is marked "Tempo ordinario".

Measures 1-2: **f** (forte), starting with a 7-measure rest.

Measures 3-4: **p** (piano), featuring trills (*tr*) and triplets (3).

Measures 5-6: **f** (forte), featuring trills (*tr*) and triplets (3).

Measures 7-8: **p** (piano), featuring trills (*tr*) and triplets (3).

Measures 9-10: **p** (piano), featuring trills (*tr*) and triplets (3).

Measures 11-12: **p** (piano), featuring trills (*tr*) and triplets (3).

Measures 13-14: **f** (forte), featuring trills (*tr*) and triplets (3).

Measures 15-16: **f** (forte), featuring trills (*tr*) and triplets (3).

Measures 17-18: **f** (forte), featuring trills (*tr*) and triplets (3).

20 *p* *tr* *tr* *Vivace*
4/4

26 *f* *

29

32 *tr* *

35

37

39

41 *tr* *tr*

44 *tr*