

Tůma. Collected works.

František Ignác Antonín

Tůma

Sinfonia

TumW J.17

Sinfonia

2 vl, bc

edited by Wolfgang Esser-Skala

Full score



Edition Esser-Skala · Koppl, Austria · 2025

© 2025 by Edition Esser-Skala (Selbstverlag § 2 Abs 1 Z 7 GewO 1994). This edition is licensed under a Creative Commons Attribution-ShareAlike 4.0 International License. To view a copy of this license, visit <https://creativecommons.org/licenses/by-sa/4.0/>.

Music engraving by LilyPond 2.24.2 (<https://www.lilypond.org>) and EES Tools v2023.10.0.
Front matter typeset with Source Sans and Fredericka the Great.

Please report any errors or mistakes to edition@esser-skala.at.

 [edition-esser-skala/tuma-collected-works](https://github.com/edition-esser-skala/tuma-collected-works)
v2025.05.0, 2025-05-31 (07d2552ab60515592d54728812ff36f5949c5c6e)



Critical Report

Abbreviations

bc basso continuo
vl violin

Sources


B1 *Library* A-SEI
 Shelfmark V 1034
 Category manuscript copy (principal source)
 Date unknown
 RISM ID 600025926
 License public domain
 URL none
 Notes 3 parts (vl 1, vl 2, b)

Commentary

In general, this edition closely follows the principal source. Any changes that were introduced by the editor are indicated by italic type (lyrics, dynamics and directives), parentheses (expressive marks and bass figures) or dashes (slurs and ties). Accidentals are used according to modern conventions. For further details, consult the Editorial Guidelines available on the Edition's webpage.

Asterisks denote the following emendations:

<i>Bar</i>	<i>Staff</i>	<i>Description</i>
2	bc	last ♫ in B1 : A8
25	vl 2	1st ♫ in B1 : d'4
27	vl 2	2nd ♫ in B1 : g'4
29	vl 1	2nd ♫ in B1 : a [#] 4
39	bc	5th ♫ in B1 : a8
50	bc	bar in B1 : c [#] 2-f [#] 4
57	bc	3rd ♫ in B1 : c [#] 4
77	vl 2	1st ♫ in B1 : d'8

<i>Bar</i>	<i>Staff</i>	<i>Description</i>
86	vl 1	1st  in B1 : g''8
101	vl 2	bar in B1 : f#''8-c#''8

J.17 Sinfonia

Allegro

I
Violino
f

II
f

Basso continuo
f

Measures 1-2: Violino I and II parts with a forte (f) dynamic. Basso continuo part.

Measures 3-4: Violino I and II parts. Basso continuo part.

Measures 5-6: Violino I and II parts. Basso continuo part.

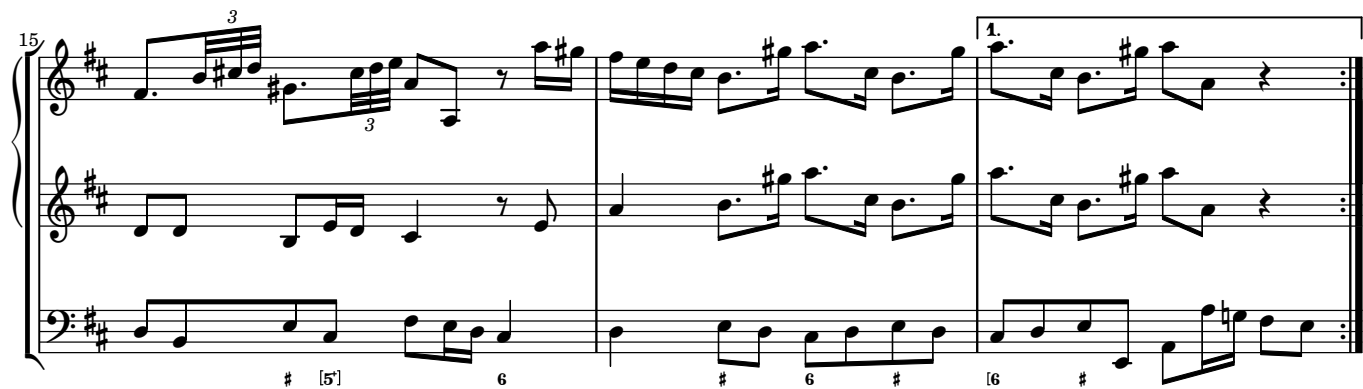
Measure 7: Violino I and II parts. Basso continuo part.



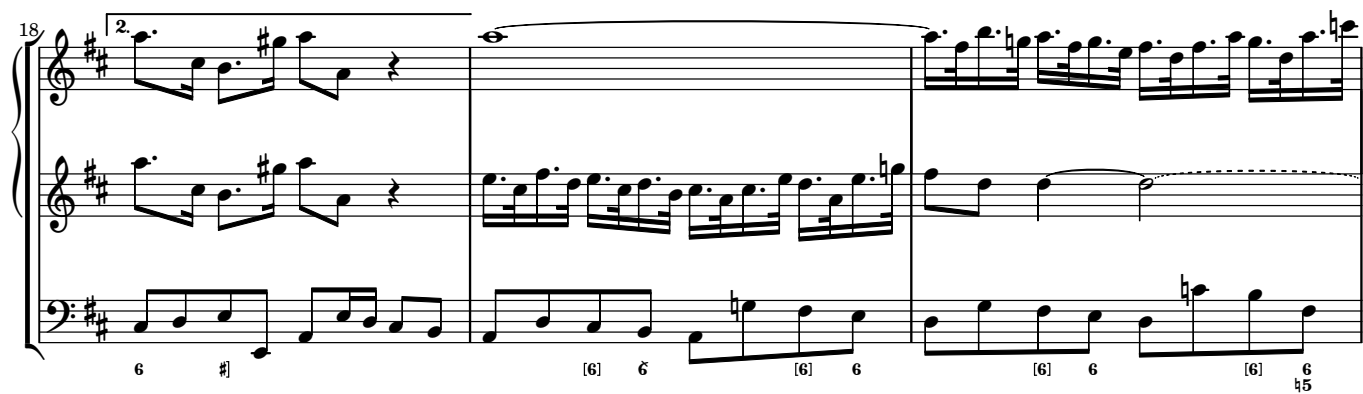
System 9-11: Treble and bass staves with piano accompaniment. The bass line includes figured bass notation: 6, 6, 7, #, 3, 4, 6/3, 6, [6], 4, #.



System 12-14: Treble and bass staves with piano accompaniment. Dynamics include *p* (piano) and *f* (forte). The bass line includes figured bass notation: 6, [4], 4, [4]7, 7, 7, 7/[5], [7]#, 4/4, [7]#, 4/4, [5]#, 6.



System 15-17: Treble and bass staves with piano accompaniment. The bass line includes figured bass notation: #, [5], 6, #, 6, #, [6], #.



System 18-20: Treble and bass staves with piano accompaniment. The bass line includes figured bass notation: 6, #, [6], 6, [6], 6, [6], 6, [6], 6, [6], 6, 4/5.

21

[5] 6 7 6 7 6] 6 6 # 6 9 [6]

=

24

9 [6] b6 6 6 6 [6] 6 7 8 [6] b 6 4 #

=

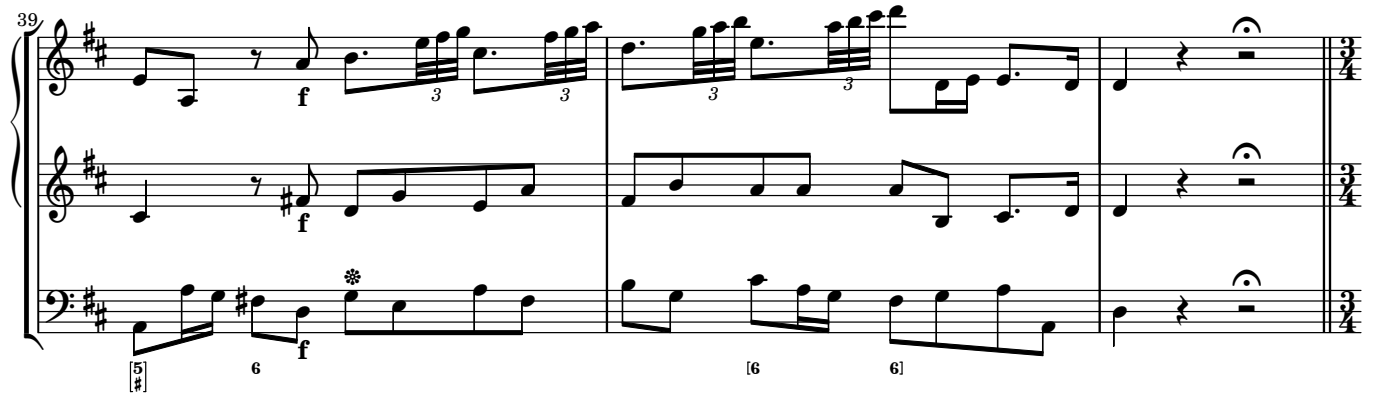
27

4 6 6 b 4 6 6 b 4 6 6

=

30

5 5



49

6 6 # 6 6 [6] 4 #

56

[6] 6 5 4 6 6 6 6 5 6

63

7 6 # [6] 6 [6] 6 3 4 #

70

Allegro

p p f f 6 6 6 6 6 6 6 5 #

78

6 6 6 5 4 3 6 9 7 6 6 #

85

6 7 6 9 # 8 6 # 5 9 8 6 - 4 6

93

6 - 4 6 6 6 6 6 6 #

101

108

- 6 6 6 6 6 6

115

6 6 6 6 6 6 6 6

124

6 6 6 6 6 9 8 6 5 9 8

132

6 - 4 6 6 - 4 6 6 6 6 6 6 5 6