

Haydn.

Proprium missæ.

Johann Michael

Haydn

Ut tibi dulces

Motet

MH 47

S (solo), S, A, T, B (coro), 2 clno (C), timp (C-G), 2 vl, b, org

Violino II



Edition Esser-Skala, 2023

© 2023 by Edition Esser-Skala. This edition is licensed under a Creative Commons Attribution-ShareAlike 4.0 International License. To view a copy of this license, visit <https://creativecommons.org/licenses/by-sa/4.0/>.

Music engraving by LilyPond 2.24.0 (<https://www.lilypond.org>) and EES Tools v2022.12.0.
Front matter typeset with Source Sans and Fredericka the Great.

Please report any errors or mistakes to edition@esser-skala.at.

 [edition-esser-skala/haydn-m-proprium-missae](https://github.com/edition-esser-skala/haydn-m-proprium-missae)
v2023.07.0, 2023-07-22 (3fd79c4526dc1e440c70023f50b2c05f071c3c4c)



47 Ut tibi dulces

Allegretto

violin 2

p *f*

4 *p*

7 *f* *tr.* *

11 [*tr.*]

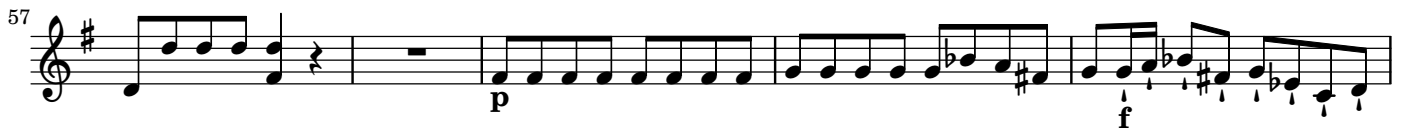
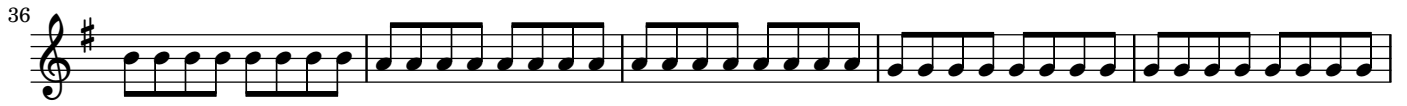
15 *p* *f*

20 *pp*

24 *f* *p*

28 *f* *p*

32 *f* *p*



77 

81 

84 

88 

91 

96 

99 

103 

107 

Alleluia

111 Allegro
vl 2 *f*

115

121

128

133

137

142

148

153

The image shows a musical score for a violin part, labeled 'vl 2'. The score is in 3/4 time and marked 'Allegro'. It begins at measure 111 with a forte (f) dynamic. The music consists of ten staves of notation. The first staff (measures 111-114) features a series of eighth-note patterns. The second staff (measures 115-120) continues with similar eighth-note patterns, including some rests. The third staff (measures 121-127) shows a mix of eighth and sixteenth notes. The fourth staff (measures 128-132) features a more complex rhythmic pattern with many sixteenth notes. The fifth staff (measures 133-136) is dominated by sixteenth-note runs. The sixth staff (measures 137-141) continues with sixteenth-note patterns and includes a fermata. The seventh staff (measures 142-147) features a mix of eighth and sixteenth notes. The eighth staff (measures 148-152) continues with sixteenth-note runs. The final staff (measures 153-156) concludes with a series of eighth notes, including a fermata at the end. There are asterisks (*) above some notes in measures 142 and 153.

159

164

171

177

181

185

189

194

202