

Bybler.

Sacred music.

Joseph Leopold Edler von
Eybler

Te Deum
HerEy 117

Hymn

S, A, T, B (coro), 2 ob, 2 clno (C), timp (C-G), 2 vl, vla, vlc, b, org

edited by Wolfgang Esser-Skala

Violino I



Edition Esser-Skala · Koppl, Austria · 2025

© 2025 by Edition Esser-Skala (Selbstverlag § 2 Abs 1 Z 7 GewO 1994). This edition is licensed under a Creative Commons Attribution-ShareAlike 4.0 International License. To view a copy of this license, visit <https://creativecommons.org/licenses/by-sa/4.0/>.

Music engraving by LilyPond 2.24.2 (<https://www.lilypond.org>) and EES Tools v2023.10.0.
Front matter typeset with Source Sans and Fredericka the Great.

Please report any errors or mistakes to edition@esser-skala.at.

 [edition-esser-skala/eybler-sacred-music](https://github.com/edition-esser-skala/eybler-sacred-music)
v2025.02.0, 2025-02-28 (036d3e1eb102b6e0b0783743d2055600f4ee2bb9)



117 Te Deum

Allegro con spirito

vl 1

f

4

7

p

10

f

13

16

19

22

p

cresc.

25

f

28 

31 

34 

36 

38 

40 

42 

44 

46 

48

50

52

54

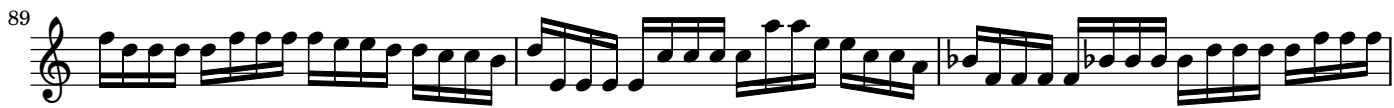
56

58

60

62

65



95 

98 

100 

102 

104 

106 

108 

111 

114 

Te ergo quæsumus

117 *Adagio*
con sordino

vl 1

p *cresc.*

120 *p* *f* *p*

123 *fp* *cresc.*

126 *fp*

129 *pp* *cresc.*

132 *p* *sfp*

135 *cresc.* *fp* *f*

138 *p*

141 *tr*

Æterna fac

Allegro vivace

145 *tr* *f*

150 *tr*

154

158 *tr*

162 *tr*

166 *p*

170

174

178 *tr* *fz*

The image shows a page of musical notation for a piece titled "Æterna fac". The tempo is marked "Allegro vivace". The score is written for a single melodic line on a treble clef staff in 3/4 time. It consists of nine staves of music, with measure numbers 145, 150, 154, 158, 162, 166, 170, 174, and 178 indicated at the beginning of their respective staves. The notation includes various rhythmic values, accidentals (sharps and naturals), and performance markings such as trills (tr), dynamics (f, p, fz), and slurs. The piece concludes with a sharp sign at the end of the final staff.

183 Musical staff 183: Treble clef, 7/8 time signature. Starts with a fermata over a quarter note, followed by eighth notes. Dynamics include 'fz' and 'f'.

188 Musical staff 188: Treble clef, eighth-note patterns, trills.

192 Musical staff 192: Treble clef, eighth-note patterns, trills, fermata.

196 Musical staff 196: Treble clef, eighth-note patterns, trills.

200 Musical staff 200: Treble clef, eighth-note patterns, trills.

204 Musical staff 204: Treble clef, eighth-note patterns, trills.

208 Musical staff 208: Treble clef, eighth-note patterns, trills.

212 Musical staff 212: Treble clef, eighth-note patterns, trills, fermata.

216 Musical staff 216: Treble clef, eighth-note patterns, trills, fermata.

220 Musical staff 220: Treble clef, 4/4 time. Measures 1-4. Measure 1: quarter notes G4, A4, B4, C5. Measure 2: quarter notes B4, A4, G4, F4. Measure 3: quarter notes E4, D4, C4, B3. Measure 4: quarter notes A3, G3, F3, E3. Dynamics: p.

224 Musical staff 224: Treble clef, 4/4 time. Measures 1-4. Measure 1: quarter notes G4, A4, B4, C5. Measure 2: quarter notes B4, A4, G4, F4. Measure 3: quarter notes E4, D4, C4, B3. Measure 4: quarter notes A3, G3, F3, E3. Dynamics: p.

228 Musical staff 228: Treble clef, 4/4 time. Measures 1-4. Measure 1: quarter notes G4, A4, B4, C5. Measure 2: quarter notes B4, A4, G4, F4. Measure 3: quarter notes E4, D4, C4, B3. Measure 4: quarter notes A3, G3, F3, E3. Dynamics: fp.

232 Musical staff 232: Treble clef, 4/4 time. Measures 1-4. Measure 1: quarter notes G4, A4, B4, C5. Measure 2: quarter notes B4, A4, G4, F4. Measure 3: quarter notes E4, D4, C4, B3. Measure 4: quarter notes A3, G3, F3, E3. Dynamics: p.

236 Musical staff 236: Treble clef, 4/4 time. Measures 1-4. Measure 1: quarter notes G4, A4, B4, C5. Measure 2: quarter notes B4, A4, G4, F4. Measure 3: quarter notes E4, D4, C4, B3. Measure 4: quarter notes A3, G3, F3, E3.

240 Musical staff 240: Treble clef, 4/4 time. Measures 1-4. Measure 1: quarter notes G4, A4, B4, C5. Measure 2: quarter notes B4, A4, G4, F4. Measure 3: quarter notes E4, D4, C4, B3. Measure 4: quarter notes A3, G3, F3, E3. Dynamics: p.

244 Musical staff 244: Treble clef, 4/4 time. Measures 1-4. Measure 1: quarter notes G4, A4, B4, C5. Measure 2: quarter notes B4, A4, G4, F4. Measure 3: quarter notes E4, D4, C4, B3. Measure 4: quarter notes A3, G3, F3, E3.

248 Musical staff 248: Treble clef, 4/4 time. Measures 1-4. Measure 1: quarter notes G4, A4, B4, C5. Measure 2: quarter notes B4, A4, G4, F4. Measure 3: quarter notes E4, D4, C4, B3. Measure 4: quarter notes A3, G3, F3, E3. Dynamics: cresc.

252 Musical staff 252: Treble clef, 4/4 time. Measures 1-4. Measure 1: quarter notes G4, A4, B4, C5. Measure 2: quarter notes B4, A4, G4, F4. Measure 3: quarter notes E4, D4, C4, B3. Measure 4: quarter notes A3, G3, F3, E3. Dynamics: f.

256 Musical staff 256: Treble clef, eighth-note runs.

259 Musical staff 259: Treble clef, eighth-note runs with a sharp sign.

262 Musical staff 262: Treble clef, eighth-note runs with a sharp sign.

265 Musical staff 265: Treble clef, eighth-note runs with trills.

269 Musical staff 269: Treble clef, eighth-note runs with trills.

273 Musical staff 273: Treble clef, eighth-note runs with trills.

277 Musical staff 277: Treble clef, eighth-note runs with trills.

281 Musical staff 281: Treble clef, eighth-note runs with trills.

285 Musical staff 285: Treble clef, eighth-note runs with trills.

289

293

297

301

305

309

313

317

321

325

329

333

337

341

345

349

353

360