

# Cantorey.

# Perf. materials.

Johann Sebastian  
**Bach**

Jesu, meine Freude  
BWV 227

*b, org*

*Bassi*




Edition Esser-Skala, 2023

© 2023 by Edition Esser-Skala. This edition is licensed under a Creative Commons Attribution-ShareAlike 4.0 International License. To view a copy of this license, visit <https://creativecommons.org/licenses/by-sa/4.0/>.

Music engraving by LilyPond 2.24.0 (<https://www.lilypond.org>) and EES Tools v2022.12.0.  
Front matter typeset with Source Sans and Fredericka the Great.

Please report any errors or mistakes to [edition@esser-skala.at](mailto:edition@esser-skala.at).

 [edition-esser-skala/cantorey-performance-materials](https://github.com/edition-esser-skala/cantorey-performance-materials)  
v2023.07.0, 2023-07-22 (6551caf41ab8d05b2df2340ba2f197daf7af2721)





## 2 Es ist nun nichts

20

*b* *p* *f*

25

*p*

30

*pp* *p*

35

*f*

40

44

48

53

58

*p* *f*

Detailed description of the musical score: The score is written for a single bass clef instrument in the key of D major (one sharp) and 3/4 time. It begins at measure 20. The first staff (measures 20-24) starts with a piano (*p*) dynamic and features a half note followed by a quarter note, then rests, and ends with a half note. The second staff (measures 25-29) continues with a piano (*p*) dynamic, showing a sequence of quarter notes and half notes. The third staff (measures 30-34) starts with a pianissimo (*pp*) dynamic, followed by a piano (*p*) dynamic, with notes and rests. The fourth staff (measures 35-39) begins with a forte (*f*) dynamic, featuring a half note followed by quarter notes. The fifth staff (measures 40-43) continues with a forte (*f*) dynamic, showing a more active melodic line with eighth and quarter notes. The sixth staff (measures 44-47) maintains the forte (*f*) dynamic with a similar active melodic line. The seventh staff (measures 48-52) features a long, sweeping melodic line with a slur over the first few notes. The eighth staff (measures 53-57) shows a more rhythmic pattern with quarter and half notes. The final staff (measures 58-61) starts with a piano (*p*) dynamic, followed by a forte (*f*) dynamic, ending with a half note.

62

**p** **pp**

67

**p**

72

**f**

77

81

86

90

94

99

### 3 Unter deinen Schirmen





## 5 Trotz dem alten Drachen

147

b

154

162

167

174

p

f

182

189

p

196

f

p

f

203



## 6 Ihr aber seid nicht

210 *b*  Musical notation for measures 210-212. Measure 210 starts with a bass clef, a key signature of one sharp (F#), and a common time signature (C). It begins with a rest followed by a series of eighth notes, then a slur over a group of eighth notes, and continues with more eighth notes.

213  Musical notation for measures 213-215. Measure 213 starts with eighth notes, followed by a sharp sign (#) above a note, and then a slur over a group of eighth notes.

216  Musical notation for measures 216-218. Measure 216 starts with eighth notes, followed by a slur over a group of eighth notes, and continues with more eighth notes.

219  Musical notation for measures 219-220. Measure 219 starts with eighth notes, followed by a sharp sign (#) above a note, and continues with more eighth notes.

221  Musical notation for measures 221-223. Measure 221 starts with eighth notes, followed by a slur over a group of eighth notes, and ends with a fermata over a note.

224  Musical notation for measures 224-226. Measure 224 starts with a rest, followed by eighth notes, and continues with more eighth notes.

227  Musical notation for measures 227-229. Measure 227 starts with eighth notes, followed by a slur over a group of eighth notes, and continues with more eighth notes.

230  Musical notation for measures 230-232. Measure 230 starts with eighth notes, followed by a sharp sign (#) above a note, and continues with more eighth notes.

233  Musical notation for measures 233-235. Measure 233 starts with eighth notes, followed by a slur over a group of eighth notes, and continues with more eighth notes.

235

237

239

241

243

Adagio

246

249

252

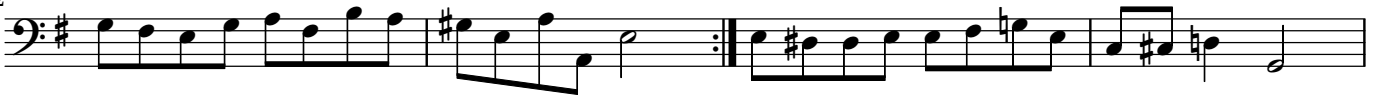
255

## 7 Weg mit allen Schätzen

258



262



272



# 8 So aber Christus

277 *Andante*

280

283

286

288

290

293

295

297

## 9 Gute Nacht, o Wesen

300

*p* *f*

306

312

318

324

330

336

342

348





# 11 Weicht, ihr Trauergeister

