

Haydn.

Proprium missæ.

Johann Michael

Haydn

Lætatus sum

MH 480

Gradual (Quadragesima, Dominica IV.)

S, A, T, B (coro), 2 cl (B \flat), 2 clno (B \flat), 2 vl, b, org

edited by Wolfgang Esser-Skala

Full score

ESSER
Skala
Edition



Edition Esser-Skala e.U. · Koppl, Austria · 2026

© 2026 by Edition Esser-Skala e.U. This edition is licensed under a Creative Commons Attribution-ShareAlike 4.0 International License. To view a copy of this license, visit <https://creativecommons.org/licenses/by-sa/4.0/>.


Edited by Wolfgang Esser-Skala ·  0000-0002-7350-4045.

Music engraving by LilyPond 2.24.4 (<https://www.lilypond.org>) and EES Tools v2026.01.0.

Front matter typeset with Source Sans and Fredericka the Great.

Please report any errors or mistakes to edition@esser-skala.at.

Archival Resource Key: **ark:68748/e1jmh480**

 [edition-esser-skala/haydn-m-proprium-missae](https://doi.org/10.26907/2542-0196.2026.01.0)
v2026.01.0, 2026-01-31 (*bf78bebf2e3dc71a107ce007959cb0607e6fb4a8*)



Critical Report

Abbreviations

A	alto
B	bass
b	basses
cl	clarinet
clno	clarion
org	organ
S	soprano
T	tenor
vl	violin

Sources

A1	<i>Library</i>	D-Mbs
	<i>Shelfmark</i>	Mus.ms. 354
	<i>Category</i>	autograph manuscript (principal source)
	<i>Date</i>	1788-02-26
	<i>RISM ID</i>	456009373
	<i>License</i>	CC BY-NC-SA 4.0
	<i>URL</i>	https://mdz-nbn-resolving.de/urn:nbn:de:bvb:12-bsb00051605-2
B1	<i>Library</i>	A-Ed
	<i>Shelfmark</i>	B 126
	<i>Category</i>	manuscript copy
	<i>Date</i>	unknown
	<i>RISM ID</i>	600038087
	<i>License</i>	public domain
	<i>URL</i>	https://dommusikarchiv.martinus.at/site/werkverzeichnis/gallery/144.html

Commentary

In general, this edition closely follows the principal source. Any changes that were introduced by the editor are indicated by italic type (lyrics, dynamics and directives), parentheses (expressive marks and bass figures) or dashes (slurs and ties). Accidentals are used according to modern

conventions. For further details, consult the Editorial Guidelines available on the Edition's webpage.

Asterisks denote the following emendations:

<i>Bar</i>	<i>Staff</i>	<i>Description</i>
–	–	cl 1, 2 only in B1
47	cl 2	bar in B1 : c"2–e"4–e"4
67	cl 1	bar in B1 : d"2–d"2

Lyrics

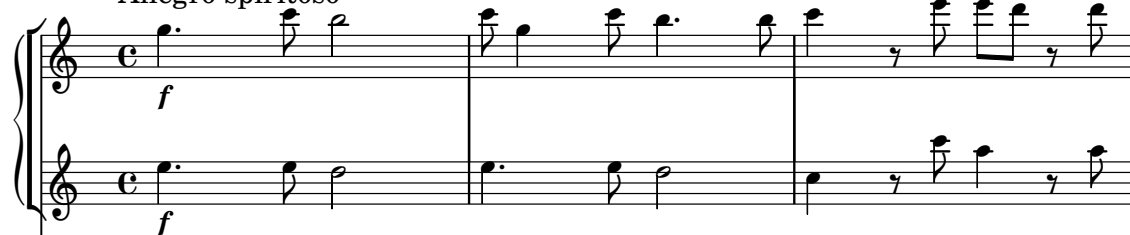
Laetatus sum in his quae dicta sunt mihi
in domum Domini ibimus.
Fiat pax in virtute tua,
et abundantia in turribus tuis.
(Psalms 122(121):1,7)

480 Lætatus sum

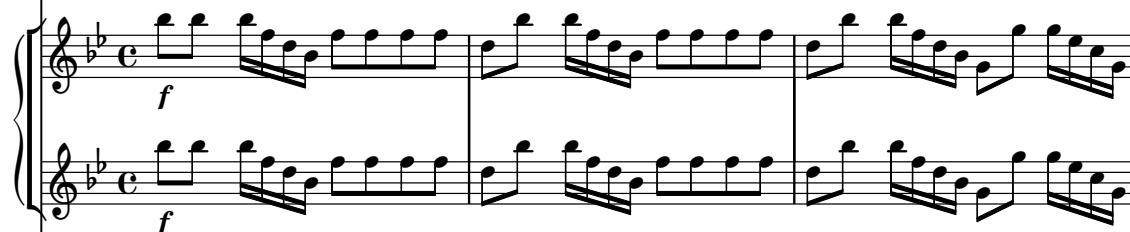
Allegro spiritoso

I
Clarinetto I, II
in B \flat

II

Clarino I, II
in B \flat I
Violino

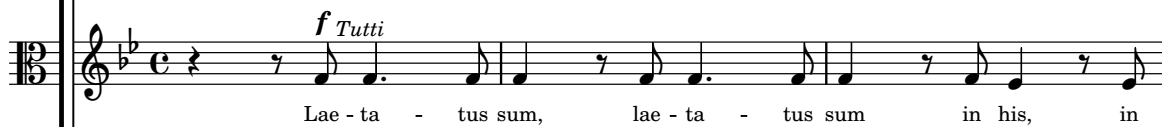
II



Soprano



Alto



Tenore



Basso

Organo
e Bassi

4

his quae di - cta sunt mi-hi in do - mum Do - mi - ni i - bi-mus, in his, in

his quae di - cta sunt mi-hi in do - mum Do - mi - ni i - bi-mus, in his, in

his quae di - cta sunt mi-hi in do - mum Do - mi - ni i - bi - mus, in his, in

his quae di - cta sunt mi-hi in do - mum Do - mi - ni i - bi - mus, in his, in

7 6 — 6 6 9 8 6 6 7 6 —
4 3 5

8

p

p

p

p

his lae-ta-tus sum, lae-ta tus sum. Fi-at pax

his lae-ta-tus sum, lae-ta tus sum. Fi-at pax

his lae-ta-tus sum, lae-ta tus sum. Fi-at pax

his lae-ta-tus sum, lae-ta tus sum. Fi-at pax

6 6 6

5

12

in vir - tu - te tu - a, in vir - tu - te

in vir - tu - te tu - a, in vir - tu - te

in vir - tu - te tu - a, in vir - tu - te

in vir - tu - te tu - a, in vir - tu - te

6 5 7 9 6 6 7

5 4 3 4 5 5 4

15

f

f

f

f

tu - a, et ab - un - dan - ti-a, et ab - un - dan - ti-a in

tu - a, et ab - un - dan - ti-a, et ab - un - dan - ti-a in

tu - a, et ab - un - dan - ti-a, et ab - un - dan - ti-a in

tu - a, et ab - un - dan - ti-a, et ab - un - dan - ti-a in

f

f

f

f

9/4 [8] 3 *f* 6/4 7 8 6

18

p *f* *p*

p *f* *p*

p *f* *p*

p *f* *p*

tur - ri - bus tu - is, fi - at pax in vir-tu-te tu-a, fi - at

tur - ri - bus tu - is, fi - at pax in vir-tu-te tu-a, fi - at

tur - ri - bus tu - is, fi - at pax in vir-tu-te tu-a, fi - at

tur - ri - bus tu - is, fi - at pax in vir-tu-te tu-a, fi - at

p *f* *p*

9 8 6 [5] 7 6 4 5 6 3 6 9 [8] 6 5 4 3 5

22

f

f

a 2

p *f*

f

f

f

f

f

f

pax in vir - tu - te tu - a, et ab - un - dan - ti-a, et ab - un -

pax in vir - tu - te tu - a, et ab - un - dan - ti-a, et ab - un -

pax in vir - tu - te tu - a, et ab - un - dan - ti-a, et ab - un -

pax in vir - tu - te tu - a, et ab - un - dan - ti-a, et ab - un -

3 ——— *f* 6 9 (8 ———] 6 6 7
5 ——— 4 3 ——— 4 ——— ———

25

dan - ti-a in tur - ri - bus tu - is.

dan - ti-a in tur - ri - bus tu - is.

dan - ti-a in tur - ri - bus tu - is.

dan - ti-a in tur - ri - bus tu - is.

8 6 9 8 6 5 4 6 6

7 6 4 4 4

28

Lae - ta - - tus sum in

Lae - ta - - tus sum in

Lae - ta - - tus sum in

Lae - ta - - tus sum in

6 4 [5] 6 6 6

4 4 5 5 5

31

his quae di - cta sunt mi - hi, in his, in_____

his quae di - cta sunt mi - hi, in his, in

his quae di - cta sunt mi - hi, in his, in_____

his quae di - cta sunt mi - hi, in his, in_____

[6] $\frac{8}{6}$ $\frac{7}{5}$ $\frac{9}{4}$ [8 3] 6 6 5

34

his lae - ta - tus sum, lae - ta - tus sum in his, in

his lae - ta - tus sum, lae - ta - tus sum in his, in

his lae - ta - tus sum, lae - ta - tus sum in his, in

his lae - ta - tus sum, lae - ta - tus sum in his, in

3 6 6 7 6

37

his quae di - cta sunt mi - hi in do - mum Do - mi - ni i - bi -

his quae di - cta sunt mi - hi in do - mum Do - mi - ni i - bi -

his quae di - cta sunt mi - hi in do - mum Do - mi - ni i - bi -

his quae di - cta sunt mi - hi in do - mum Do - mi - ni i - bi -

7 6 6 6 9 8 6 6 6 8 6 6 7

4 3 5

40

The musical score for page 13 begins at measure 40. It features a piano accompaniment in the upper staves and vocal parts in the lower staves. The key signature is B-flat major (two flats). The piano part consists of a right-hand melody and a left-hand accompaniment. The vocal parts are arranged in four staves, each with a vocal line and lyrics. The lyrics are: "mus, in do - mum Do - mi - ni i - bi - mus, in his, in". The score includes various musical notations such as notes, rests, and accidentals. The bottom staff shows figured bass notation: - 4 - 6 46 6 6 7 4.

mus, in do - mum Do - mi - ni i - bi - mus, in his, in

mus, in do - mum Do - mi - ni i - bi - mus, in his, in

mus, in do - mum Do - mi - ni i - bi - mus, in his, in

mus, in do - mum Do - mi - ni i - bi - mus, in his, in

- 4 - 6 46 6 6 7 4

43

his lae - ta - tus sum, lae-ta-tus sum, in his, in his lae - ta - tus sum, lae-ta-tus

his lae - ta - tus sum, lae-ta-tus sum, in his, in his lae - ta - tus sum, lae-ta-tus

his lae - ta - tus sum, lae-ta-tus sum, in his, in his lae - ta - tus sum, lae-ta-tus

his lae - ta - tus sum, lae-ta-tus sum, in his, in his lae - ta - tus sum, lae-ta-tus

6 6 6/5 6/5 4 6 6/5

47

p

p

p

p

sum, lae - ta - tus sum. Fi - - at pax

sum, lae - ta - tus sum. Fi - - at pax

sum, lae - ta - tus sum. Fi - - at pax

sum, lae - ta - tus sum. Fi - - at pax

6 7 *p* 6 6

50

in vir - tu - te tu - a, in vir - tu - te

in vir - tu - te tu - a, in vir - tu - te

in vir - tu - te tu - a, in vir - tu - te

in vir - tu - te tu - a, in vir - tu - te

6 7 9 [8] 6 6 7
5 4 3 5

53

f

f

f

f

f

tu - a, et ab - un - dan - ti-a, et ab - un - dan - ti-a in

tu - a, et ab - un - dan - ti-a, et ab - un - dan - ti-a in

f

tu - a, et ab - un - dan - ti-a, et ab - un - dan - ti-a in

f

tu - a, et ab - un - dan - ti-a, et ab - un - dan - ti-a in

f

9 4 [8] 3 6 9 8 7 6 5

56

p *f* *p* *p* *f* *p*

* *p* *f* *p*

p *f* *p* *p* *f* *p*

p *f* *p* *p* *f* *p*

tur - ri - bus tu - is, fi - at pax in vir - tu - te tu - a, fi - at

tur - ri - bus tu - is, fi - at pax in vir - tu - te tu - a, fi - at

tur - ri - bus tu - is, fi - at pax in vir - tu - te tu - a, fi - at

tur - ri - bus tu - is, fi - at pax in vir - tu - te tu - a, fi - at

p *f* *p* *p* *f* *p*

5 3 6 4 5 3 6 6 4 5 [3] *p* 6 5 5 *f* 6 5 9 4 3 *p* 6 5

60

Piano Accompaniment (Measures 60-65):

- Measures 60-61: *f* (forte)
- Measure 62: *p* (piano) then *f* (forte)
- Measures 63-65: *f* (forte)

Vocal Parts (Measures 60-65):

f (forte)

pax in vir - tu - te tu - a, et ab - un - dan - ti-a, et ab - un -

f (forte)

pax in vir - tu - te tu - a, et ab - un - dan - ti-a, et ab - un -

f (forte)

pax in vir - tu - te tu - a, et ab - un - dan - ti-a, et ab - un -

f (forte)

pax in vir - tu - te tu - a, et ab - un - dan - ti-a, et ab - un -

Fingerings (Measures 60-65):

3 ——— *f* 6 ——— 9 3 ——— 6 9 8
5 ——— 4 ———

63

dan - ti-a in tur - ri - bus tu - is.

dan - ti-a in tur - ri - bus tu - is.

dan - ti-a in tur - ri - bus tu - is.

dan - ti-a in tur - ri - bus tu - is.

7 6 5 5 6 5 6 6 5 6 6

5 3 4 [3] 4 [3] 6 6

[illegible]

69

The musical score for page 22, measures 69-71, is presented in a system of five staves. The first two staves are for the piano accompaniment, with dynamics *p* and *f* indicated. The next three staves are for vocal parts, with lyrics in Latin. The lyrics are: "fi - - at pax, fi - - at in vir - tu - te tu - a, fi - - at in vir - tu - te tu - a, fi - - at in vir - tu - te tu - a, fi - - at". The piano accompaniment features a steady eighth-note pattern in the right hand and a more complex pattern in the left hand. The vocal parts enter in measure 70 with the lyrics "in vir - tu - te tu - a, fi - - at". The piano accompaniment continues with the same pattern, and the vocal parts continue with the lyrics "in vir - tu - te tu - a, fi - - at". The piano accompaniment ends in measure 71 with a final chord.

p *f* *p*

p *f* *p*

fi - - at pax, fi - - at

in vir - tu - te tu - a, fi - - at

in vir - tu - te tu - a, fi - - at

in vir - tu - te tu - a, fi - - at

p *f* *p*

p *f* *p*

72

f

f

f

f

pax in vir - tu - te tu - a, et ab - un - dan - ti-a, et ab - un -

pax in vir - tu - te tu - a, et ab - un - dan - ti-a, et ab - un -

pax in vir - tu - te tu - a, et ab - un - dan - ti-a, et ab - un -

pax in vir - tu - te tu - a, et ab - un - dan - ti-a, et ab - un -

2 6 8 7 6 5 6 9 8

f

76

dan - ti-a in tur - ri - bus tu - is, in

dan - ti-a in tur - ri - bus tu - is, in

dan - ti-a in tur - ri - bus tu - is, in

dan - ti-a in tur - ri - bus tu - is, in

7 6 5 5 6 5 6 6 5 [3] 6 5

79

tur - ri - bus tu - is, in his quae di - cta sunt

tur - ri - bus tu - is, in his quae di - cta sunt

tur - ri - bus tu - is, in his quae di - cta sunt

tur - ri - bus tu - is, in his quae di - cta sunt

5 3 6 4 5 3 6 6 4 5 [3] b7 6 4 b7

82

mi - hi lae - - ta - tus, lae - ta - tus sum, lae - ta - tus sum.

mi - hi lae - - ta - tus, lae - ta - tus sum, lae - ta - tus sum.

mi - hi lae - - ta - tus, lae - ta - tus sum, lae - ta - tus sum.

mi - hi lae - - ta - tus, lae - ta - tus sum, lae - ta - tus sum.

8 6 6 6

5 5 5 5